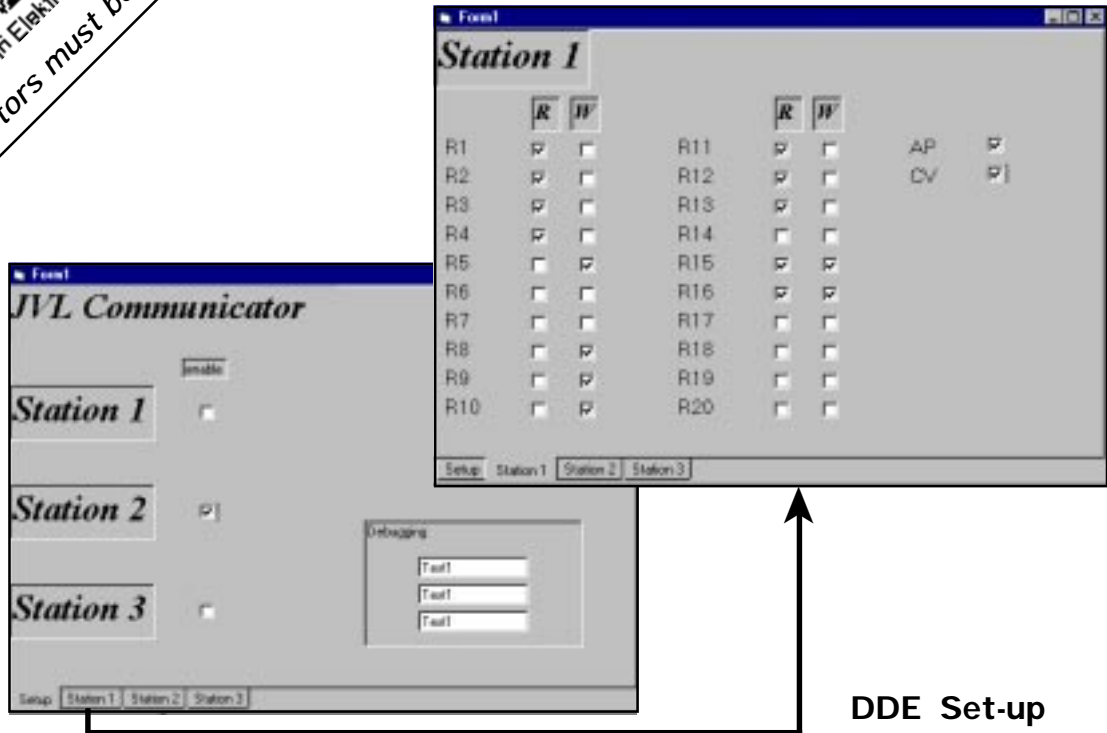




...when motors must be controlled

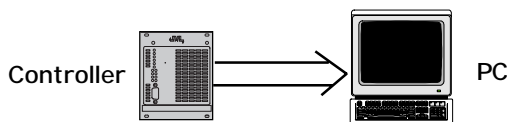
# DLL File and DDE Driver



DDE Set-up

JVL's DLL (Dynamic Linked Library) file and DDE (Dynamic Data Exchange) driver make it possible to develop and use Windows software with JVL's AC and DC Servo Motor Controllers and Servo/Step Motor Indexers.

## DLL (Dynamic Linked Library)



This DLL file can be used with Windows 95/NT and 3.11, and makes it possible to develop Windows programs for controlling JVL Controllers. The DLL file enables applications to be easily developed in, for example:

Visual Basic, Visual C++, Delphi, Labview

The DLL file enables commands to be sent from Windows to JVL Controllers. Programmers need not think about opening or closing the RS232 port. Communication is taken care of entirely by the DLL file. In Visual Basic for example, it is only necessary to include the

following line of code: Include c:\windows\system\DLL10.dll. All common JVL commands are then available.

JVL's DLL file supports the following JVL Controllers:

AC Servo: AMC10, AMC11, AMC12

DC Servo: DMC10

Step/Servo: SMI30, SMI31

JVL's DLL supports all important commands, as well as:

**X-Y commands:**

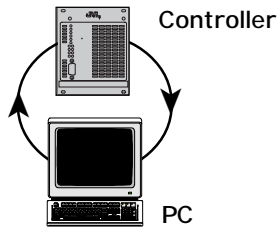
A single command controls 2 axes, e.g. for an x-y table.

**Multi-start:**

Enables operation in several axes to be started simultaneously.

The program, which is designated DLL10, is supplied on 3½" diskette.

## DDE (Dynamic Data Exchange)

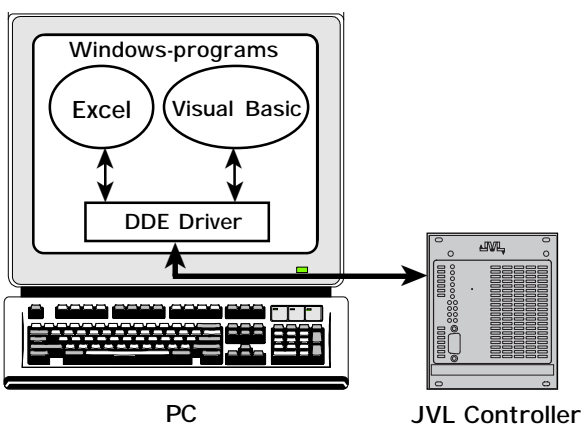


With JVL's DDE driver, which is a self-contained communications program, Windows programs that support DDE can exchange data with JVL Controllers.

DDE is a standard that Windows applications use to exchange data with each other. JVL's DDE driver is a small Windows program that starts up and runs in the background, enabling any Windows program to write and read data to/from a JVL Controller. For example, the syntax to read the contents of Controller register R1 is:

```
DDE10|JVL!R1
```

If this command is entered for example in Microsoft Excel, Excel and JVL's driver will communicate and the contents of the JVL Controller register R1 will be entered into the current spreadsheet cell. Using the DDE driver, various terminal systems, SRO systems, databases, and Visual Basic applications can communicate with a JVL Controller.



JVL's DDE driver supports the following JVL Controllers:

AC Servo: AMC10, AMC11, AMC12

DC Servo: DMC10

Step/Servo: SMI30, SMI31

The JVL DDE Driver is available in 2 versions: Standard and Enhanced. The standard version enables data to be read from 3 Controllers connected to the same COM port. The Enhanced version enables data to be exchanged with up to 32 Controllers on several COM ports. The following data can be exchanged:

*Standard version:*

20 user registers from each Controller

or

20 X-registers from each Controller

Actual position

Actual velocity

*Enhanced version:*

All user registers

All X-registers

Actual position

Actual velocity

Error messages

The program is supplied on 3½" diskette. Order numbers are:

Standard Version: DDE10

Enhanced Version: DDE10E

*Representative*