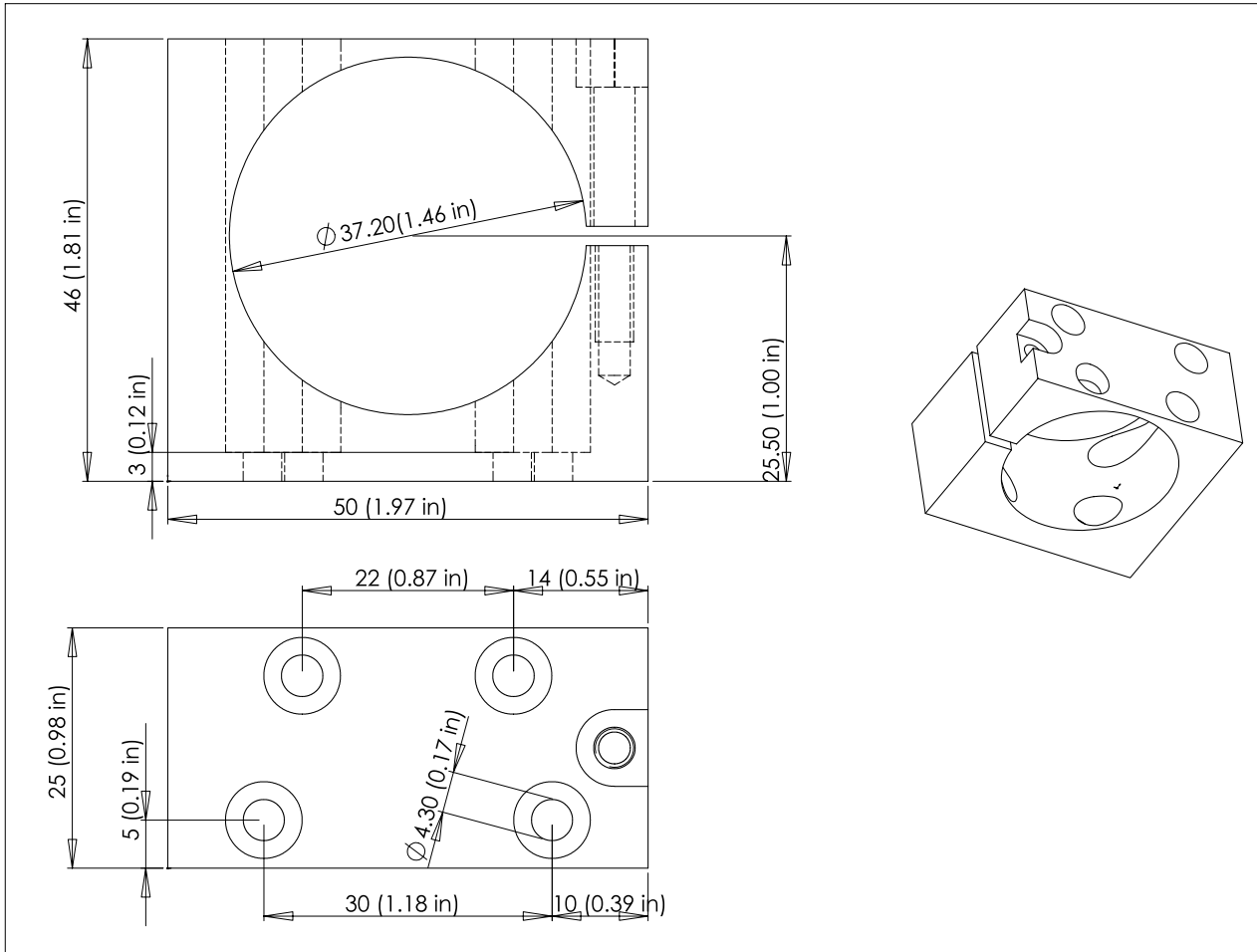


Mounting Flange MF01-37/H37



Installation Instructions:

1. Install mounting flange with two M4 mounting screws. Do not tighten at this time.
2. Position MagSpring in flange and tighten clamping screw - Max torque: 200 Ncm (1.475 ft lbs.) Over tightening may damage the MagSpring.
3. Tighten mounting screws.



all dimensions in mm / () denotes inch

Material: Aluminium (AlMgSi)
Black anodized

Weight: ca 70 g (0.15 lb)

Clamping screw: M4 screw ISO 4762 (included)
Mounting screws: M4 screw ISO 4762 (not included)

Part-No: 0200-2307
Description: MF01-37/H37

NTI AG
MagSpring®
Technoparkstr. 1
CH-8005 Zürich / Switzerland

Phone: +41 1/445 22 82
Fax: +41 1/445 22 81
Email: office@MagSpring.com
Home: www.MagSpring.com

LinMot® Inc.
Delavan, WI 53115
Email: us-sales@LinMot.com
Phone: 877 546 3270
262-728-2699

Fax 800 463-8708
262-740-0141