

Linear Motor Family P01-23x80

The linear motors of the P01-23x80 family feature a particularly compact design, enabling them to be fitted even where space is restricted. For controlling the P01-23x80 linear motors the servo controllers of Series 100 are employed.

Performance data:		
Max. stroke:	340mm	13.4in
Max. force:	33N	7.4lbf
Max. accel.:	280m/s ²	11000in/s ²
Max. velocity:	2.4m/s	95in/s

Dimensions:		
Stator length:	177mm	7in
Stator diameter:	23mm	0.9in
Stator mass:	265g	0.58lb
Slider diameter:	12mm	0.5in

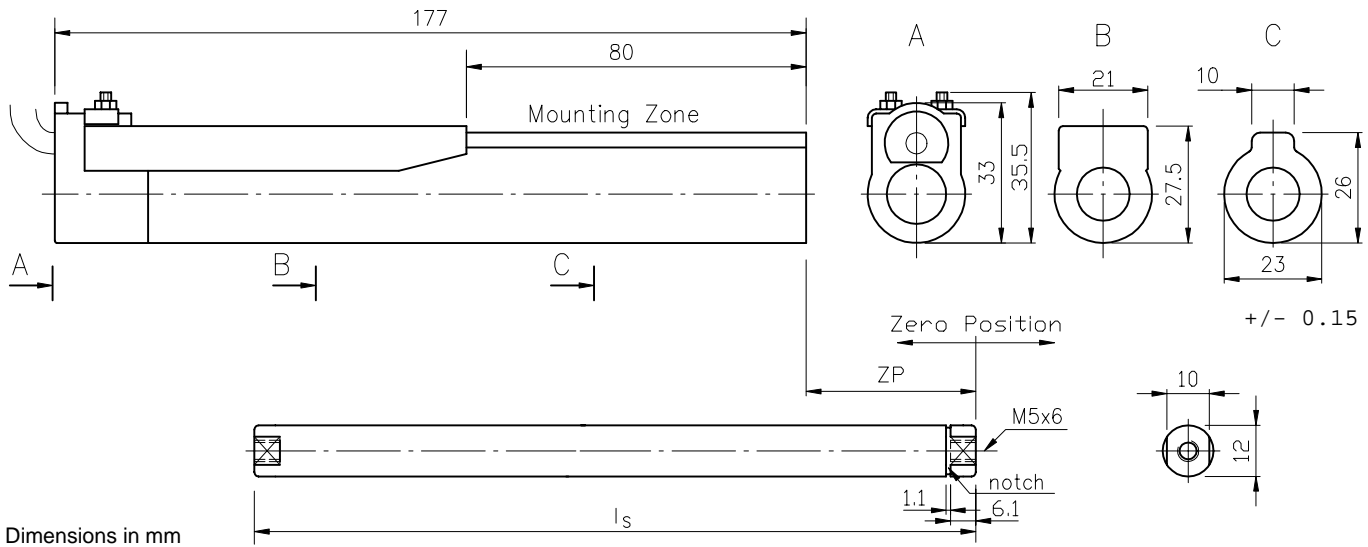
Connections:		
Cable:	9 pole (4+5)	
Cable length:	1m	3.3ft
Connector:	9-pin D-Sub (m)	

Temperature:		
Max. stator temp.:	65°C	150°F



Connector assignment:			
1 red	phase 1 +	6 pink	phase 1 -
2 blue	phase 2 +	7 grey	phase 2 -
3 white	+5 V _{DC}	8 brown	ground
4 yellow	sine sensor	9 green	cosine sensor
5 black	temp. sensor	Shield on housing	

Physical dimensions



Accessories

Fixing flange:	PF01-23x50	length 50mm (2in)	Art. No. 0150-1901
Extension cable:	K01-23/02	length 2m (6.6ft)	Art. No. 0150-1910
	K01-23/04	length 4m (13.1ft)	Art. No. 0150-1911
	K01-23/06	length 6m (19.7ft)	Art. No. 0150-1912
	K01-23/08	length 8m (26.2ft)	Art. No. 0150-1913

Specifications of products are subject to change without notification