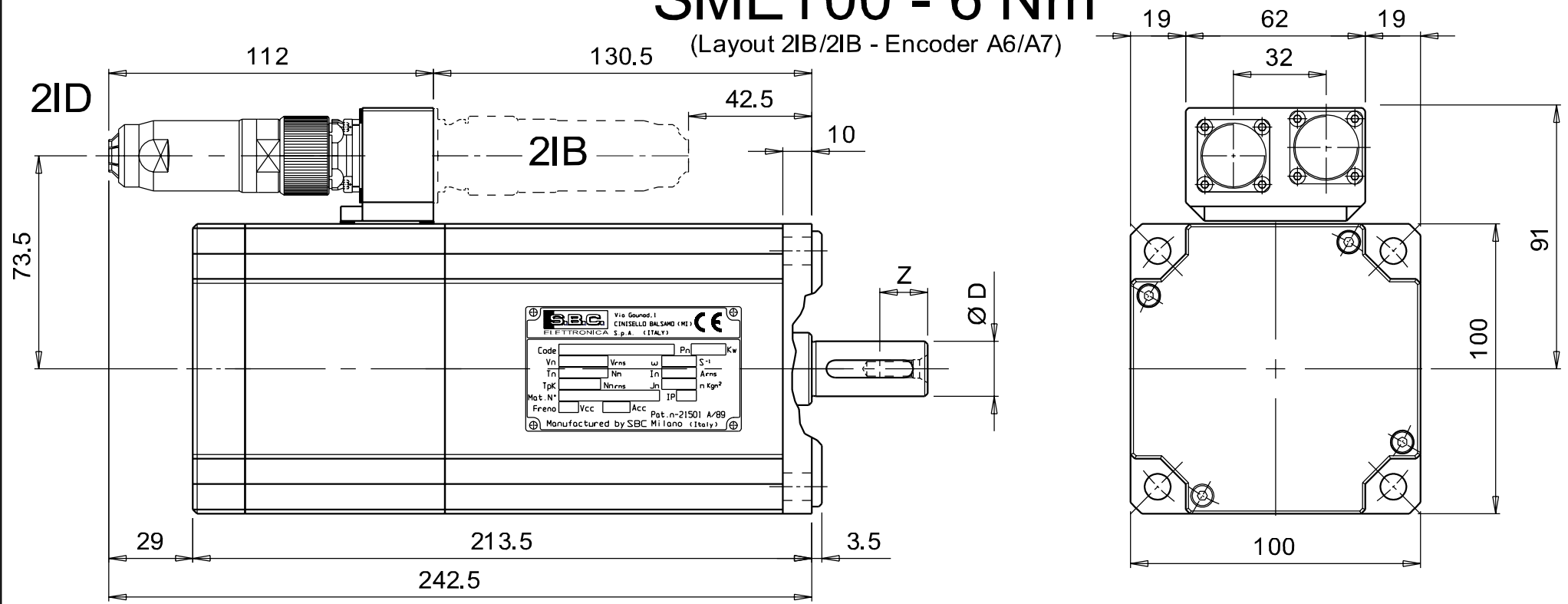


Tolleranze generali : UNI EN 22768 - f K
 General Tolerances :

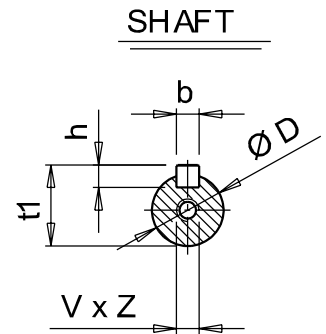
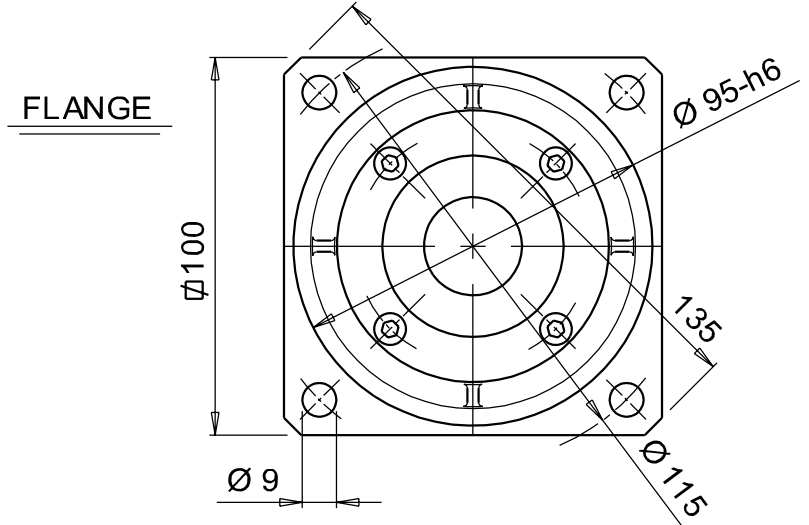
SME100 - 6 Nm

(Layout 2IB/2IB - Encoder A6/A7)



SBC Via Gounod, 1
 CINISELLO BALSAMO (MI)
 S.p.A. (ITALY)

Code: Pn Kw
 Vn Vrms ω S-1
 In Nn In Arms
 Tpk Ntrms Jn r Kgm²
 Mat. N° IP
 Freno Vcc Acc Pat. n° 21501 A/89
 Manufactured by SBC Milano (Italy)



SHAFT DIMENSIONS							
Pos.*	C x D		b x h		t1	V x Z	
1	40	19	6	6	21.5	M6	16
2	50	24	8	7	27	M8	19

* It is the shaft id. number required for the motor ordering. If followed by "S" letter means shaft without key.

Materiale/Material: -
 Trattamento/Treatment: -

Parker Parker Hannifin S.p.A.
 Divisione S.B.C.
 Via Gounod n°1 - Tel. +39 02 66012459
 20092 Cinisello Balsamo (MI) - ITALY

Scala/Scale	Data / Date	Firma / Sign
--	05/04/04	MDLARO
	05/04/04	PAGANI
INTERPRET PER ISO	--	REV.0

Modifiche / Revisions	Ref.	Data / Date	Rev.	Descrizione / Description	Eseg. / Esec.	Control. / Check
⑤	--	--	--			
④	--	--	--			
③	--	--	--			
②	--	--	--			
①	--	--	--			

~ = √	Descrizione : DIMENSIONS	Dis N° / Draw N°
▽ = 6.3	Description :	QISMB100D2I-A6/A7
∇ = 3.2	Tipo : SME100 2IB/2ID encoder A6/A7	Code
∇ = 0.8	Type :	--
∇ = 0.2	File: H:\SMB\Quote d'ingonbro\100\QISMB100D2I-A6 A7.prt	
∇ = 0.1	Modifiche o correzioni non eseguite con CAD sono da considerarsi NON ESECUTIVE, pertanto contestabili	
	Modifications or revisions not CAD executed must be considered NOT EXECUTIVE, therefore contestables	

Disegni, specifiche e dati contenuti in questo documento o riferimenti su questo disegno sono di proprietà della Divisione SBC, Parker Hannifin S.p.A. e non possono essere riprodotti, realizzati o utilizzati senza autorizzazione scritta della stessa. Drawings, specifications and details contained on this drawing are proprietary to the SBC Division, Parker Hannifin S.p.A. and may not be reproduced, manufactured, or otherwise used without the written consent by the same.