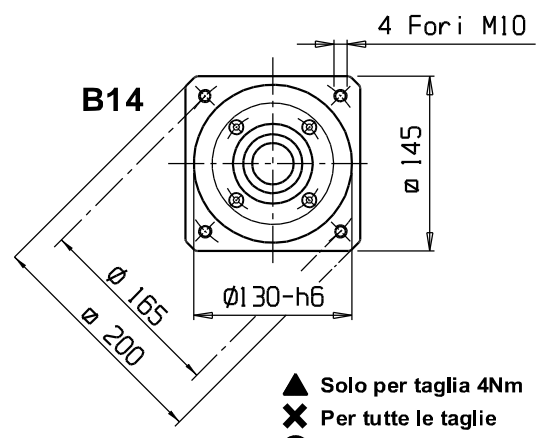
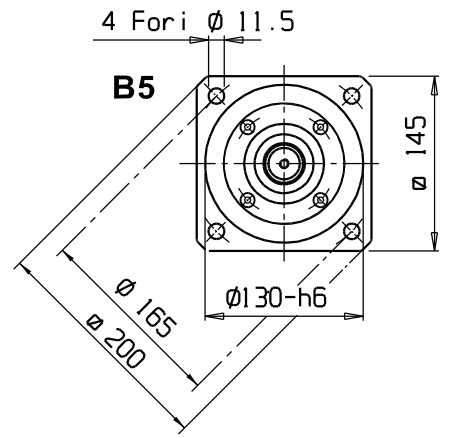
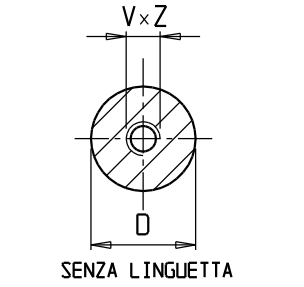
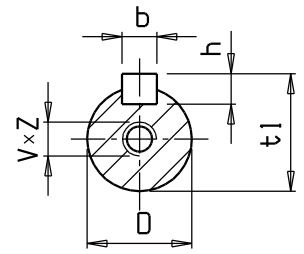
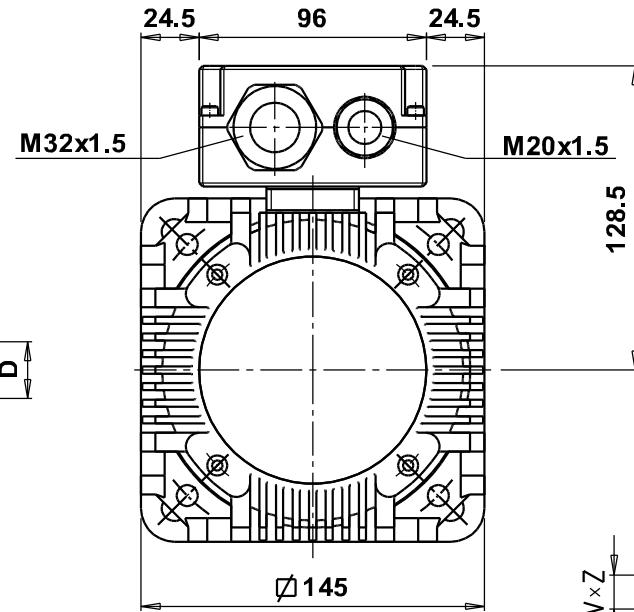
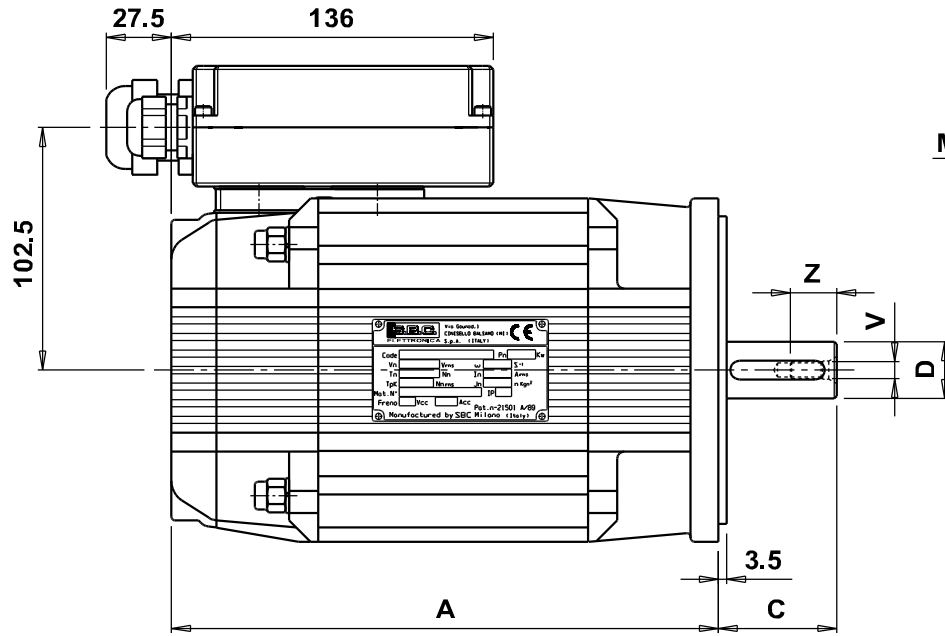


MB145 Disposizione 3M

(Scatola Morsetti con Circuito Stampato)



	Nm				
	4	8	15	22	28
"A"	200	231	292	354	416

ALBERO						
	C x D	b x h	t1	V x Z		
▲	40 x 19	6 x 6	21.5	M6	16	
✕	50 x 24	8 x 7	27	M8	19	
●	60 x 28	8 x 7	31	M10	22	

- ▲ Solo per taglia 4Nm
- ✕ Per tutte le taglie
- Per taglie 8, 15, 22 e 28Nm (4Nm solo su richiesta)

MODIFICHE			Descrizione	Eseg. da	Control.
	Data	Revisione			
--	--	--			
14/07/00	REV.1		NUOVA SCATOLA MORSETTIERA PER 145 E 205		

- ~ = ✓ Grezzo
- ∇ = 12.5 Sgrossato
- ∇∇ = 3.2 Lav.Finito
- ∇∇∇ = 0.8 Rettif.to
- ∇∇∇∇ = 0.2 Lappato

None del file:

S.p.A.
Via Gounod,1
CINISELLO B.(MI)
(ITALY)

S.B.C.
ELETTRONICA

Denominazione: **Quote D'ingombro (Disposiz. 3M)**
Motore tipo: **MB 145**

Scalo: -

Data	Firno
Disegn. 14/07/00	
Contr. 14/07/00	
Modif.to -	REV.1

Dis. **QIMB145/3M**