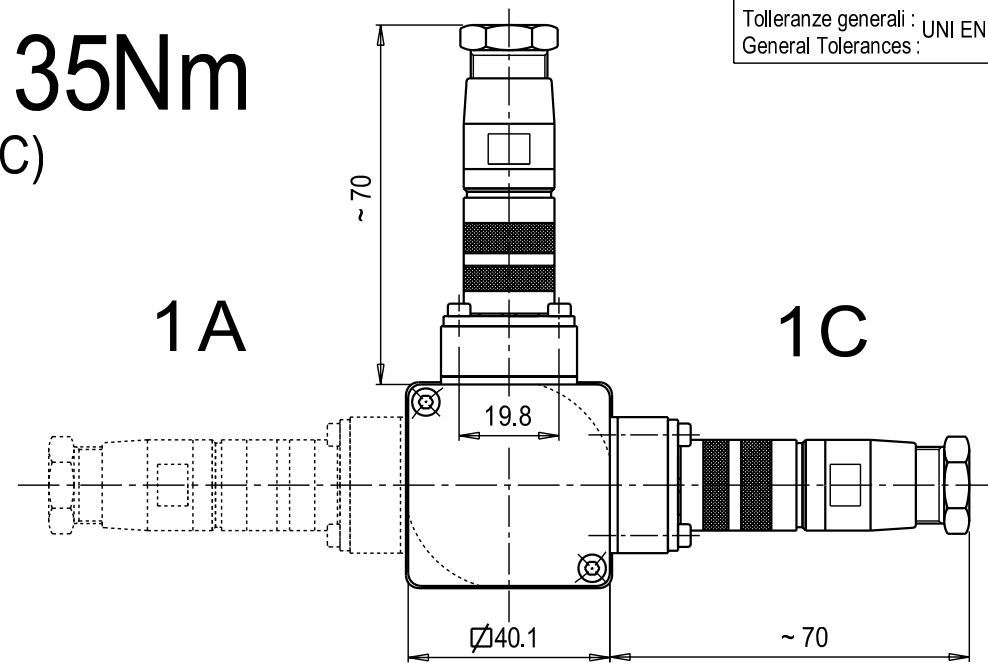
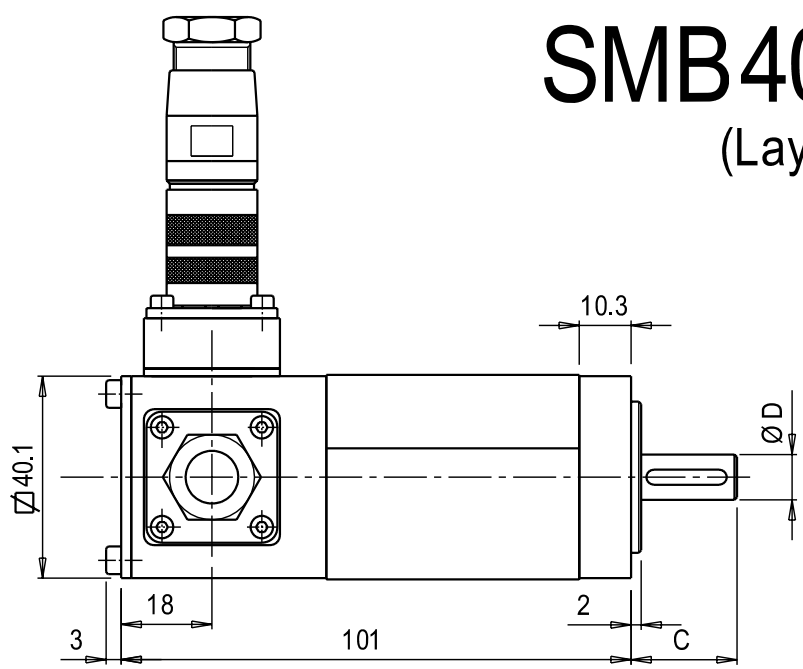


Disegni, specifiche e dati contenuti in questo documento o riferimenti su questo disegno sono di proprietà della Divisione SBC, Parker Hannifin S.p.A. e non possono essere riprodotti, realizzati o utilizzati senza autorizzazione scritta della stessa. Drawings, specifications and details contained on or referenced on this drawing are proprietary to the SBC Division, Parker Hannifin S.p.A. and may not be reproduced, manufactured, or otherwise used without the written consent by the same.

# SMB40 - 0.35Nm

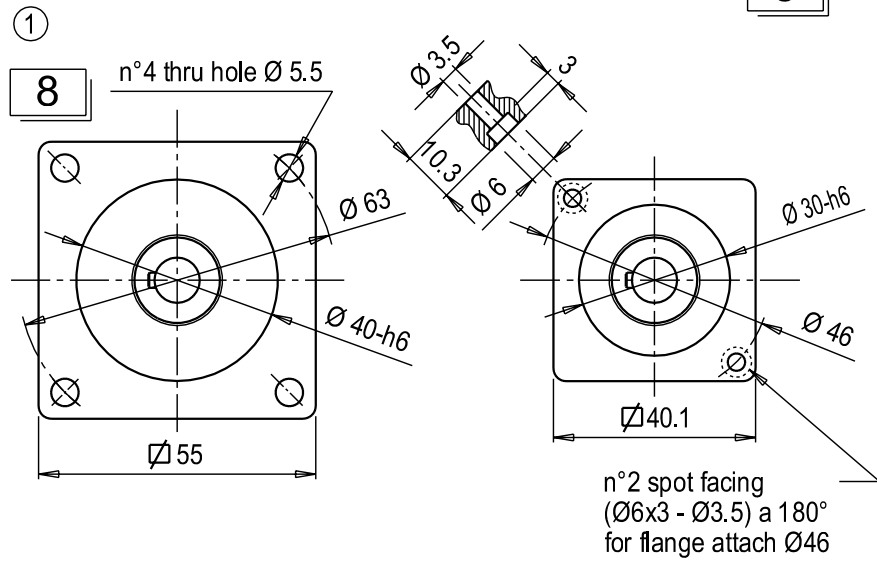
(Layout 1A-1C)

Tolleranze generali : UNI EN 22768 - f K  
General Tolerances :

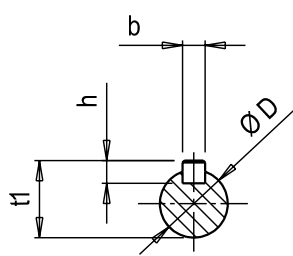


**Flange Code**

**5**



**Shaft**



| SHAFT DIMENSION |        |   |       |   |      |
|-----------------|--------|---|-------|---|------|
| Pos.            | C x D* |   | b x h |   | t1   |
| 0               | 20     | 6 | 2     | 2 | 6.8  |
| 1               | 20     | 9 | 3     | 3 | 10.2 |

\* It is the shaft id. number required for the motor ordering. If followed by "S" letter means shaft without key.

Materiale/Material: //  
Trattamento/Treatment: //

|  |                               |   |                     |
|--|-------------------------------|---|---------------------|
| <b>Parker Hannifin S.p.A.</b><br>Divisione S.B.C.<br>Via Gounod n°1 - Tel. +39 02 66012459<br>20092 Cinisello Balsamo (MI) - ITALY                                   | Scala/Scale                   | Data /Date                              | Firma / Sign        |
|  | //                            | 25/02/04                                | M. Colandi          |
|  | INTERPRET PER ISO             | 25/02/04                                | G. Pagani           |
| Descrizione :<br>Description : <b>Quote di ingombro</b><br>Tipo :<br>Type : <b>SMB40 - 0.35Nm</b><br>File: File:E:\SMB (Small Motor)\Quote d'ingombro\40\QISMB40_1AC | Modif.to<br>Modify : 02/03/04 | Dis N° / Draw N°<br><b>QISMB40/1 AC</b> | Codice<br>Code : -- |

| Modifiche / Revisions | Ref.     | Data / Date | Rev. | Descrizione / Description           | Eseg. / Esec. | Control. / Check |
|-----------------------|----------|-------------|------|-------------------------------------|---------------|------------------|
| ⑤                     | --       | --          | --   |                                     | --            | --               |
| ④                     | --       | --          | --   |                                     | --            | --               |
| ③                     | --       | --          | --   |                                     | --            | --               |
| ②                     | --       | --          | --   |                                     | --            | --               |
| ①                     | 02/03/04 | Rev.1       |      | Inserita nuova flangia Ø55 (code 8) | M. Colandi    | G. Pagani        |

~ = √  
 ▽ = 6.4  
 ▽ = 3.2  
 ▽ = 0.8  
 ▽ = 0.2

Modifiche o correzioni non eseguite con CAD sono da considerarsi NON ESECUTIVE, pertanto contestabili  
Modifications or revisions not CAD executed must be considered NOT EXECUTIVE, therefore contestables