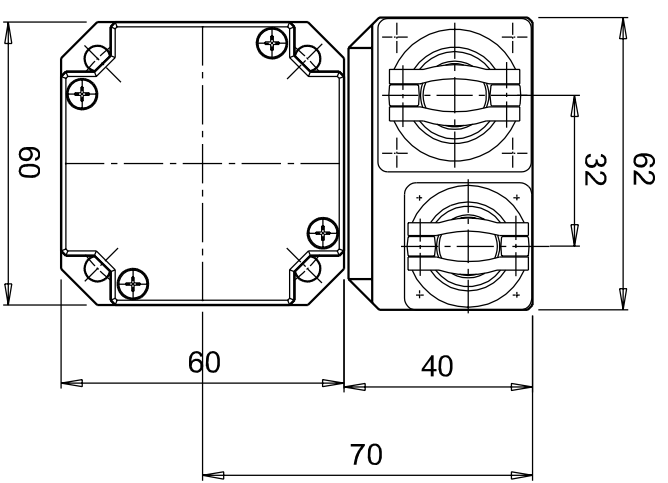
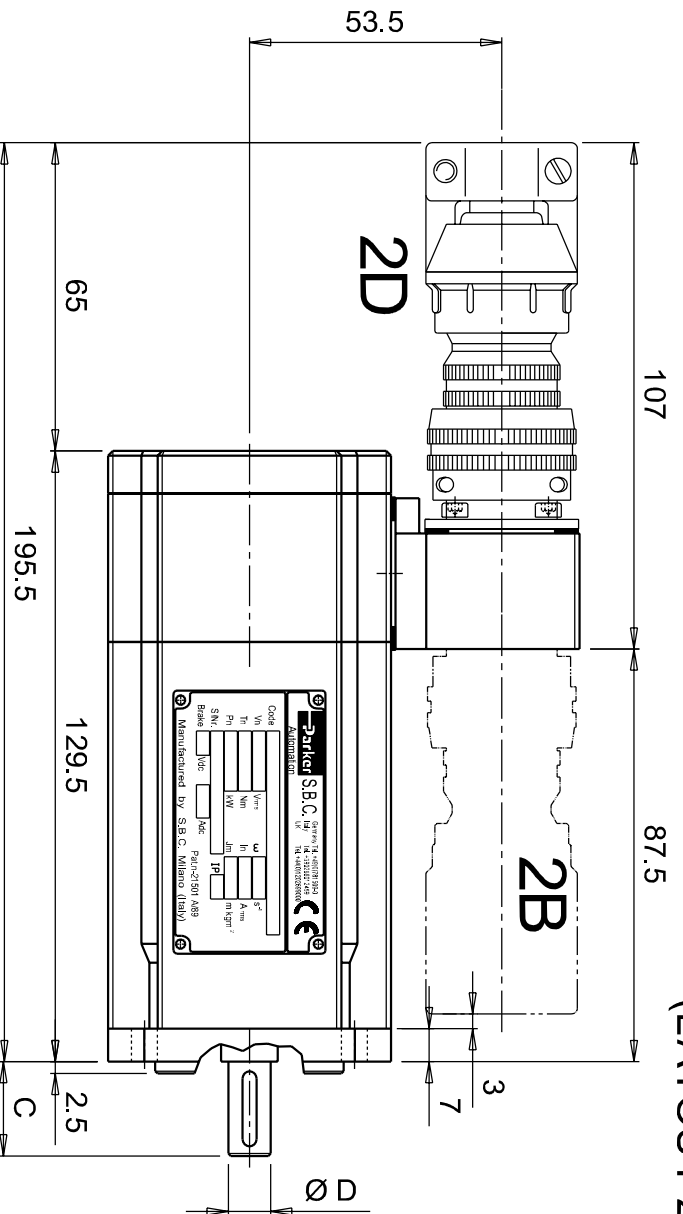


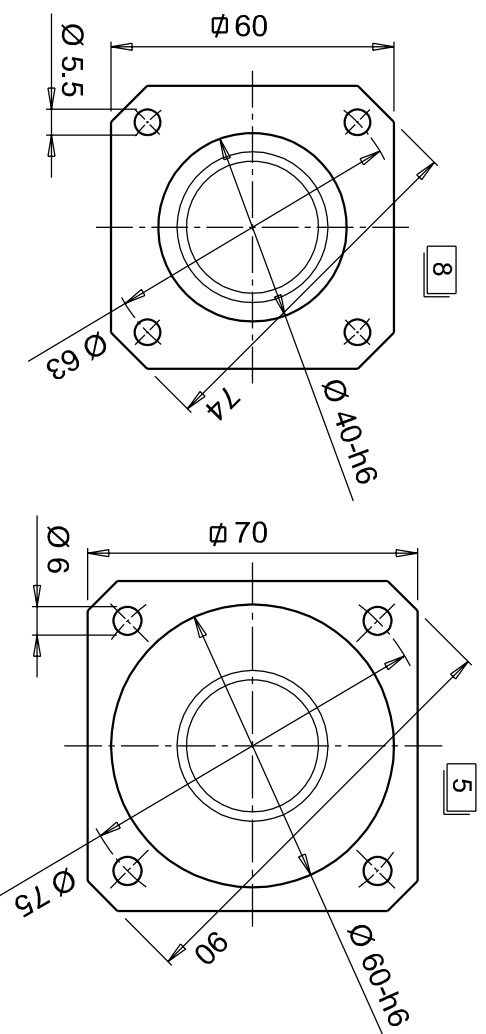
# SMB60 - 1.4 Nm

## (LAYOUT 2D - 2B)

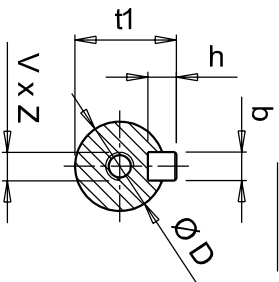
Tolleranze generali: UNI ISO 2768 - f  
General Tolerances:



### FLANGE (CODE)



### SHAFT



SHAFT DIMENSIONS					
Pos.*	C x D	b x h	t1	V x Z	
1	20 9	3 3	3	10.2	n.d.
2	23 11	4 4	4	12.5	M4 10

\* It is the shaft id. number required for the motor ordering. If followed by "S" letter means shaft without key.

Modifiche / Revisions		
Ref.	Data /Date	Rev.
①		
②		
③		
④		
⑤		

Descrizione e/Description		Eseg./Esec.	Control./Check

**Parker** Divisione S.B.C.

Parker Hannifin S.p.A.  
Via Gounod, 1 - Tel. +39 02 66012459  
20092 Cinisello Balsamo (MI) - ITALY

Scale: -  
Disegn. 03/12/01  
Controll. 03/12/01  
Firma / Sign

Descrizione: DIMENSIONS  
Tipo: SMB 60 - 1.4 Nm (LAYOUT 2)

Dis. N° Draw N° Q1SMB60D2  
Codice Code -

Disegni, specifiche e dati contenuti su questo documento o riferimenti su questo disegno sono di proprietà della Divisione SBC, Parker Hannifin S.p.A. e non possono essere riprodotti, realizzati o utilizzati senza autorizzazione scritta della stessa. Drawings, specifications and details contained on or referenced on this drawing are proprietary to the SBC Division, Parker Hannifin S.p.A. and may not be reproduced, manufactured, or otherwise used without the written consent by the same.