

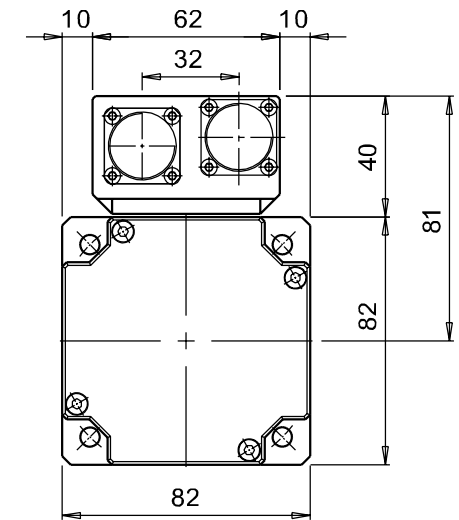
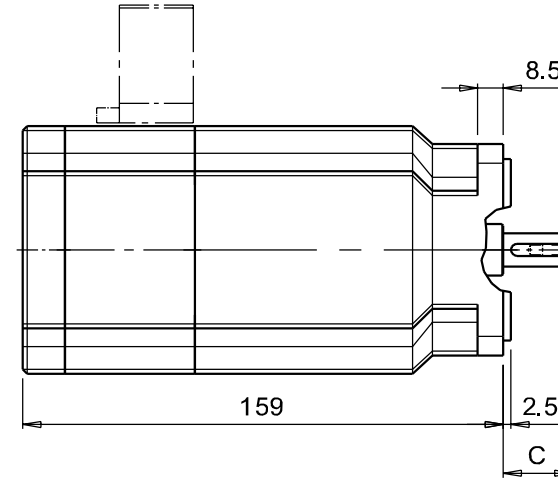
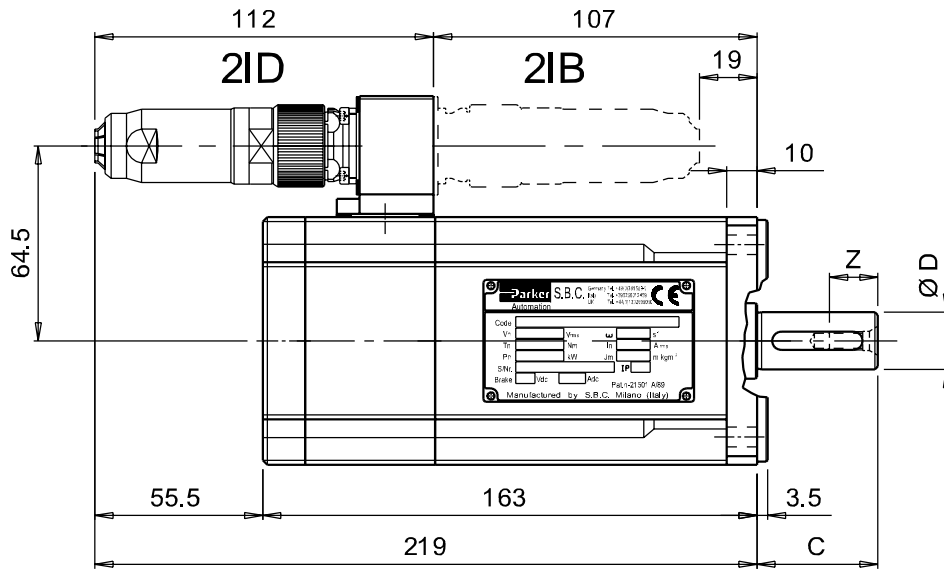
# SMB82 - 3 Nm

(Layout 2I)

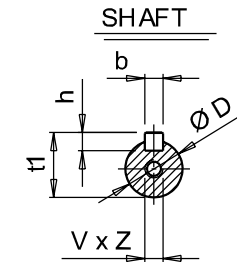
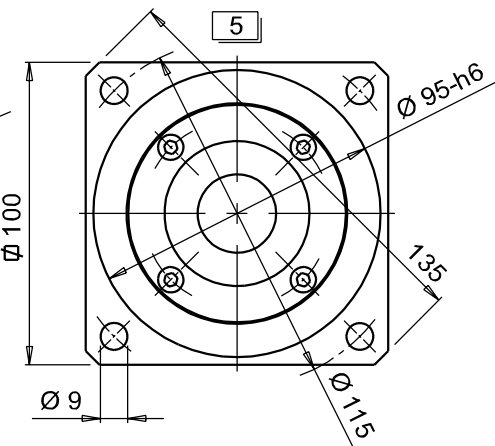
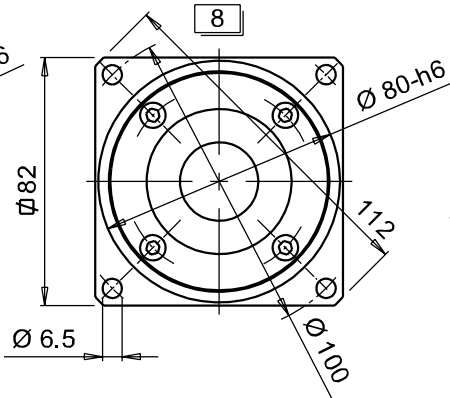
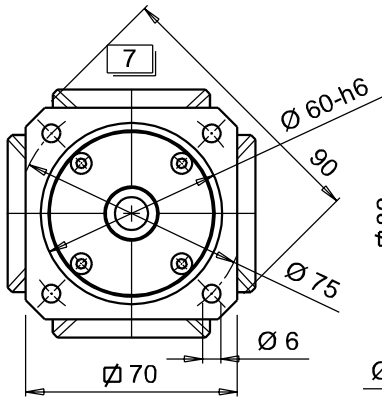
Tolleranze generali : UNI ISO 2768 - f  
General Tolerances :

FLANGE CODE 5 AND 8

FLANGE CODE 7



FLANGE (Code)



SHAFT DIMENSIONS						
Pos.	C x D <sup>x</sup>	b x h	t1	V x Z		
▲ 0	23 11	4 4	12.5	M4	10	
1	30 14	5 5	16	M5	12.5	
▲▲ 2	40 19	6 6	21.5	M6	16	

- ▲ This shaft length is employable only for torques less than 2 Nm.
- ▲▲ Not available on flange 7.
- \* It is the shaft id. number required for the motor ordering. If followed by "S" letter means shaft without key.

Modifiche / Revisions	Ref.	Data / Date	Rev.	Descrizione / Description	Eseg. / Esec.	Control. / Check
⑤	--	--	--			
④	--	--	--			
③	--	--	--			
②	08/06/04	Rev. 2		Uniformed writings		
①	16/11/01	REV. 1		ADDED FLANGE CODE 7		

~	=	6.3	√
▽	=	3.2	√
▽	=	0.8	√
▽	=	0.2	√

<b>Parker Hannifin S.p.A.</b> Divisione S.B.C. Via Gounod,1 - Tel. +39 02 66012459 20092 Cinisello Balsamo (MI) - ITALY	Scale/Scale -	Disegn. Drawing 28/06/01	Data / Date 28/06/01	Firma / Sign 
	INTERPRET PER ISO	Contr. Check 28/06/01	Modif. to Modify 08/06/04	REV. 2
Descrizione : <b>DIMENSIONS</b> Tipo : <b>SMB 82 - 3 Nm (Layout 2I)</b>	Dis N° <b>QISMB82\D2I</b> Draw N°		Codice Code -	
File: H:\SMB\Quote d'ingonbro\82\QISMB85_D2I				

Disegni, specifiche e dati contenuti in questo documento o riferimenti su questo disegno sono di proprietà della Divisione SBC, Parker Hannifin S.p.A. e non possono essere riprodotti, realizzati o utilizzati senza autorizzazione scritta della stessa. Drawings, specifications and details contained on this drawing are proprietary to the SBC Division, Parker Hannifin S.p.A. and may not be reproduced, manufactured, or otherwise used without the written consent by the same.