

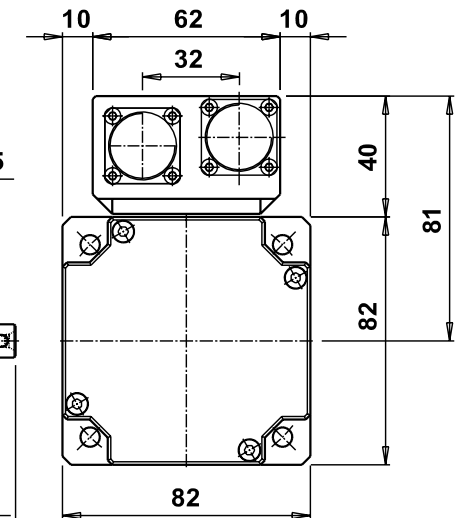
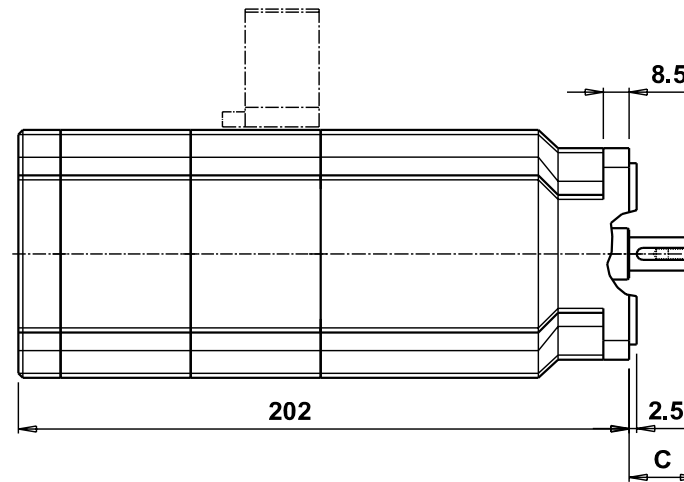
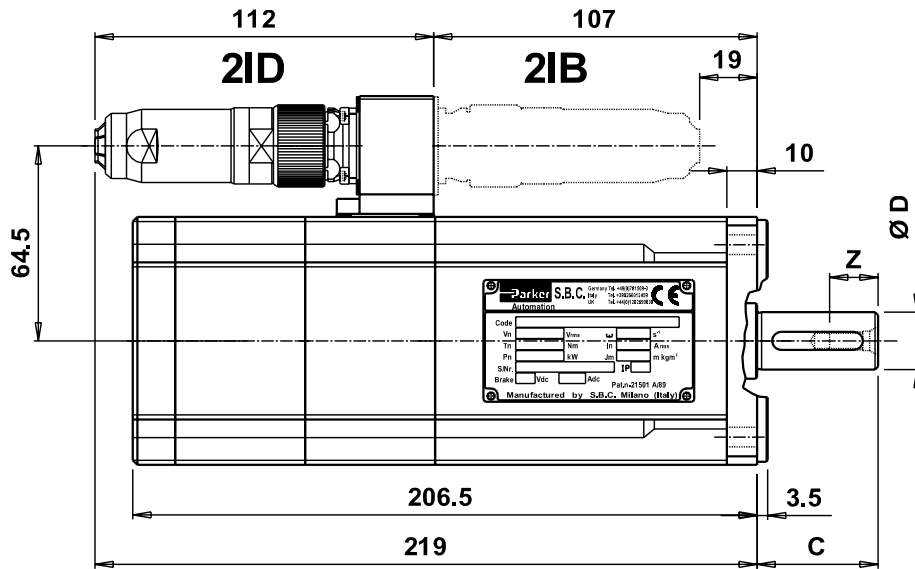
SMBA82 - 3 Nm

(Layout 2I)

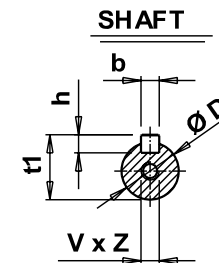
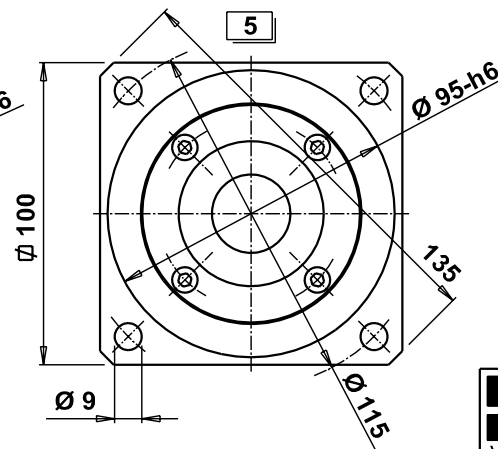
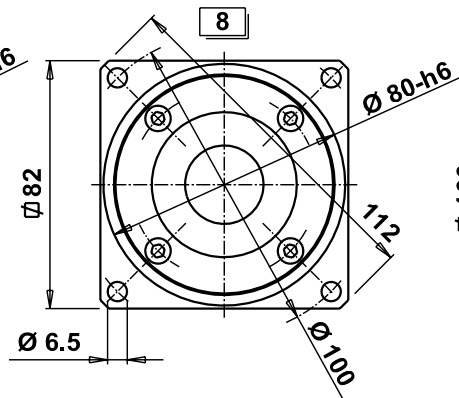
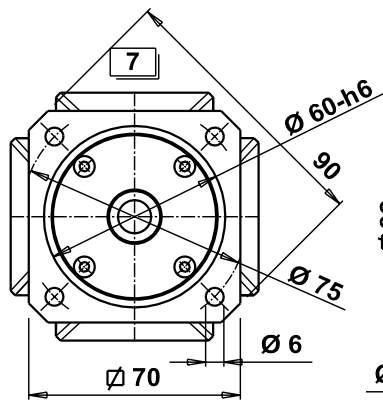
Tolleranze generali : UNI EN 22768 - f K
General Tolerances :

FLANGE CODE 5 AND 8

FLANGE CODE 7



FLANGE (Code)



SHAFT DIMENSIONS							
Pos.	C	x D [*]	b	x h	t1	V	x Z
▲ 0	23	11	4	4	12.5	M4	10
▲ 1	30	14	5	5	16	M5	12.5
▲▲ 2	40	19	6	6	21.5	M6	16

▲ This shaft length is employable only for torques less than 2 Nm.

▲▲ Not available on flange 7.

* It is the shaft id. number required for the motor ordering. If followed by "S" letter means shaft without key.

Parker Parker Hannifin S.p.A.
Divisione S.B.C.
Via Gounod n°1 - Tel. +39 02 66012459
20092 Cinisello Balsamo (MI) - ITALY

Scala/Scale	Data / Date	Firma / Sign
--	15/09/04	F. Molaro
	15/09/04	G. Pagoni
INTERPRET PER ISO	--	REV.0

Descrizione : DIMENSIONS
Description :
Tipo : SMBA 82 - 3 Nm (Layout 2I)
Type :
File:H:\SMB\Quote d'ingonbro\82\QISMB85_D2I

Dis N° / Draw N°
QISMB82\D2I
Codice Code --

Modifiche o correzioni non eseguite con CAD sono da considerarsi NON ESECUTIVE, pertanto contestabili
Modifications or revisions not CAD executed must be considered NOT EXECUTIVE, therefore contestables

Modifiche / Revisions	Ref.	Data / Date	Rev.	Mod.	Descrizione / Description	Eseg. / Esec.	Control. / Check
⑤	--	--	--	--			
④	--	--	--	--			
③	--	--	--	--			
②	--	--	--	--			
①	--	--	--	--			

~ =	✓
▽ =	6.4
▽ =	3.2
▽ =	0.8
▽ =	0.2

Disegni, specifiche e dati contenuti in questo documento o riferimenti a questo disegno sono di proprietà della Divisione SBC, Parker Hannifin S.p.A. e non possono essere riprodotti, realizzati o utilizzati senza autorizzazione scritta della stessa. Drawings, specifications and details contained on this drawing are proprietary to the SBC Division, Parker Hannifin S.p.A. and may not be reproduced, manufactured, or otherwise used without the written consent by the same.