

**Doc No.:** AN-248

**Version:** 1.0

**Date:** 03 August 2009

**Subject:** Siemens S7, P297 Profibus

# APPLICATION NOTE

[www.triomotion.com](http://www.triomotion.com)

## 1. Introduction

Some customers have found it necessary to disable 'cyclic distribution of the bus parameters' on the Siemens S7 PLC when using it on a Profibus network with the P297 Profibus Daughterboard.

If you cannot make a connection to the master and the Profibus program on the Trio controller is constantly re-initialising it maybe worth trying the following.

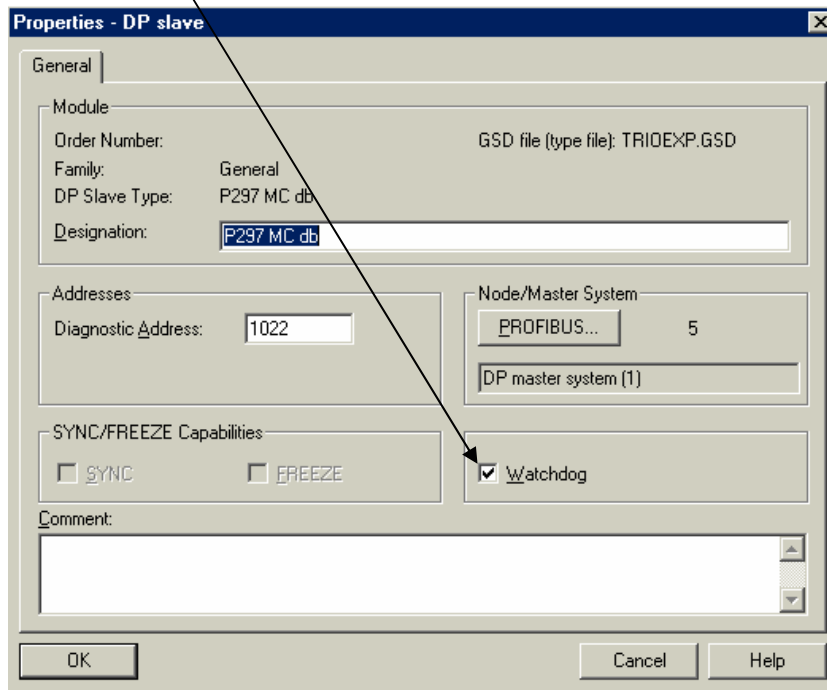
## 2. Disabling cyclic bus parameters

Open Hardware configuration and double click on the node for P297

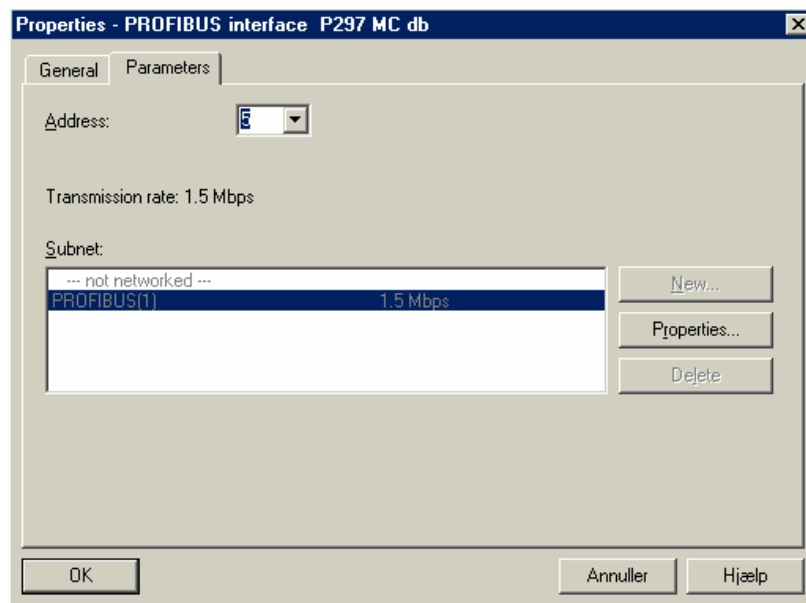
The screenshot shows the SIMATIC Manager HW Config interface. The main window displays a hardware rack configuration for a SIMATIC 300 PLC. Slot 2 contains a CPU 314C-2 DP. A Profibus DP master system (1) is connected to the DP-NORM daughterboard (P297 MC db) in slot 5. The daughterboard is configured with two modules in slots 0 and 1, both identified as P297 MC db. The I and Q addresses for these modules are 256...287.

Slot	Module / ...	Order number	I Address	Q Address	Comment
0	1641	P297 MC db	256...287		
1	1640	P297 MC db	256...287	256...287	

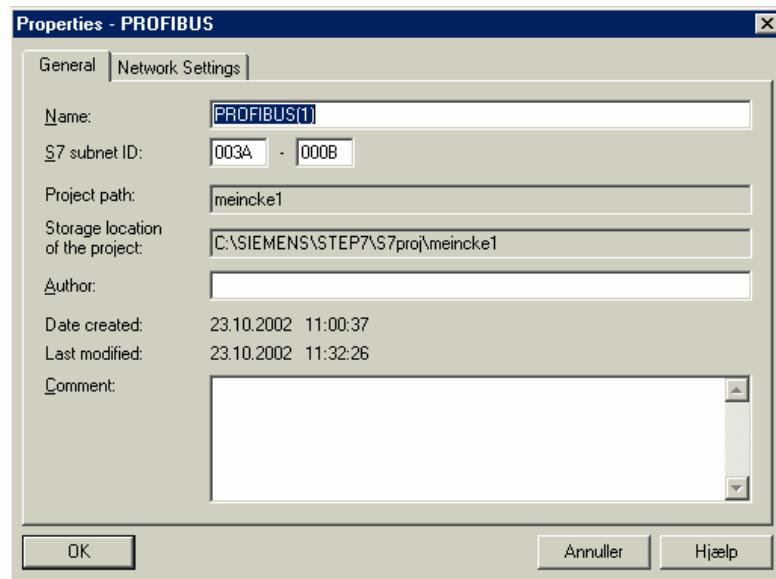
Then Click on PROFIBUS..., at the “Node/Master System”  
Remember to Tick the “Watchdog”



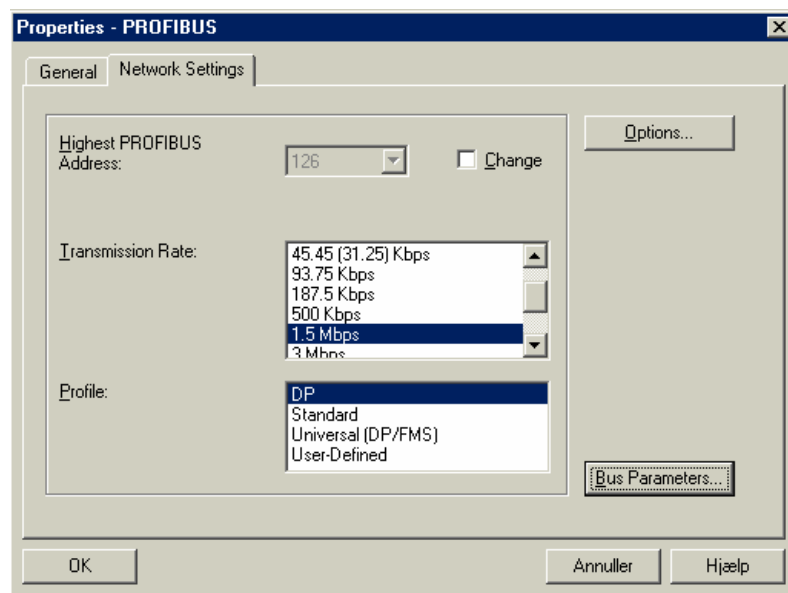
Click on Properties...



Click on the tab: “Network Settings”.



Click on “Bus Parameters...”



Remove the Tick for “Turn on cyclic distribution of the bus parameters”

