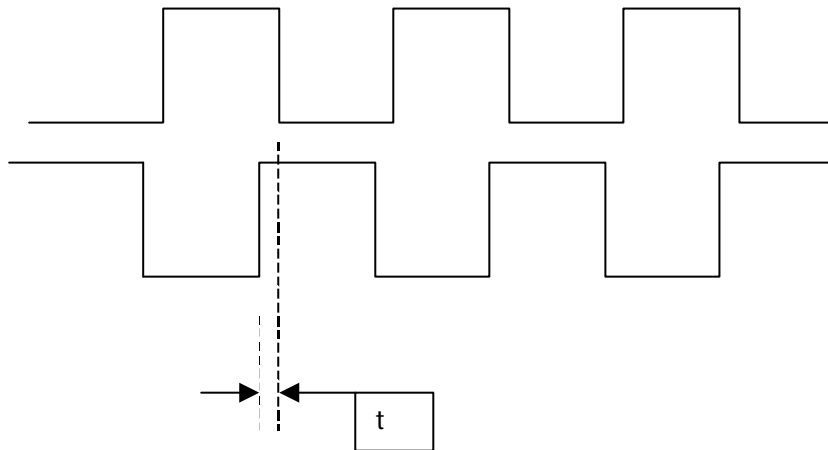


Doc No.: TN20-09
Version: 1.0
Date: 12 May 1999
Subject: Asymmetric encoder signal (P200 / P220 / P240 Daughter Board)

Note the following limitation when the encoder waveform is not symmetrical.



When the A and B pulse trains are not at 90 degrees, the maximum frequency limit is reached when $1/t > 1\text{MHz}$.

This can mean that the encoder input will have errors when the normal theoretical limit has not yet been reached.