



## ***EC Motors with LinMot Drives***

**Documentation of how to control EC Motors with  
E1100/E1200/B1100 Drive Series**



---

**EC Motors with  
E1100/E1200/B1100  
Series Drives**

---

© 2012 NTI AG

This work is protected by copyright.

Under the copyright laws, this publication may not be reproduced or transmitted in any form, electronic or mechanical, including photocopying,

recording, microfilm, storing in an information retrieval system, not even for didactical use, or translating, in whole or in part, without the prior written consent of NTI AG.

LinMot® is a registered trademark of NTI AG.

Note

The information in this documentation reflects the stage of development at the time of press and is therefore without obligation. NTI AG. Reserves itself the right to make changes at any time and without notice to reflect further technical advance or product improvement.

Document version 1.9.4, VC/Ro, May 2012

## Table of Content

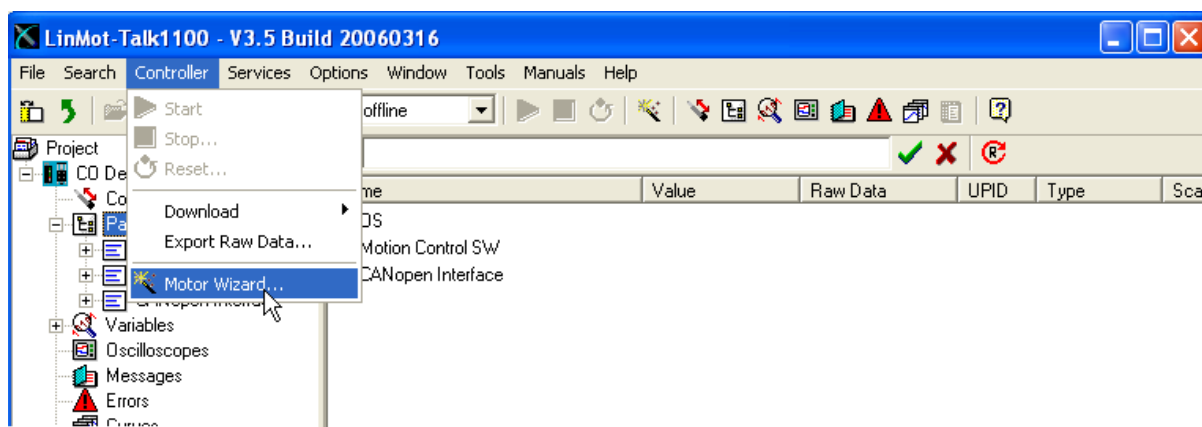
<b>1 INTRODUCTION.....</b>	<b>5</b>
<b>2 CONFIGURATION.....</b>	<b>5</b>
<b>3 MOTORS WITH ADF-FILE.....</b>	<b>6</b>
3.1 BERGER LAHR RECM.....	6
3.2 FAULHABER EC MOTORS.....	7
3.3 METRONIX APM SERVO MOTORS (E.G. FROM ELMO MOTION CONTROL).....	8
3.4 MOTOR POWER COMPANY TETRA BRUSHLESS SERVO MOTORS.....	9
3.5 SIBONI MOTORS.....	10
<b>4 SENSOR AND DIFFERENTIAL HALL SWITCHES WIRING.....</b>	<b>11</b>
<b>5 HALL SWITCHES VS. COMMUTATION ANGLE.....</b>	<b>12</b>
<b>6 CONTACT ADDRESSES.....</b>	<b>13</b>

## 1 Introduction

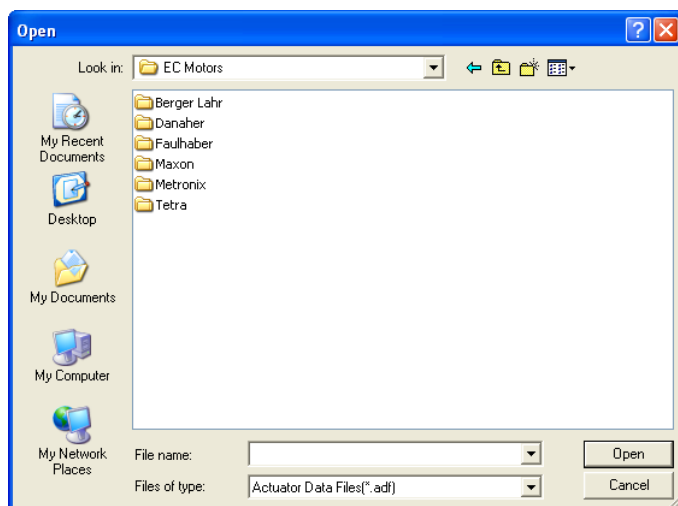
Since LinMot-Talk software release 3.4 it is possible to run 3 phase rotary EC motors on E1100 series drives. B1100 drives support this feature as well since software release 3.7. E1200 series drives can control EC motors from software release 3.11.

## 2 Configuration

The rotary EC motors are configured by using the LinMot-Talk software. For a couple of motor types LinMot provides actuator definition files (\*.adf). With such an ADF-file the motor configuration can be done by using the *Motor Wizard* tool of the LinMot-Talk software.



You will find the EC motor ADF-files in the subdirectory \Motors\Other Motors\EC Motors of your LinMot-Talk installation.



After you have selected an EC motor ADF-file, the *Motor Wizard* will guide you step by step through the configuration.

### 3 Motors with ADF-File

#### 3.1 Berger Lahr RECM

Supported Types: RECM 372/4 DC048 xl  
 RECM 374/4 DC048 xl  
 RECM 375/4 DC060 xl  
 RECM 377/4 DC060 xl

Feedback: Hall switches & ABZ encoder

Commutation: - Based on hall switches until first Z pulse from encoder  
 - Based on encoder signals afterwards (sine commutation)

Position Control: - Based on feedback from ABZ encoder

Wiring:

	B1100	E1100	E1200
Motor Phases U,V,W and PE Earth	X2 or X3	X2 or X3	X2
Hall Switches U, V, W	X13	X10 U → A V → B W → Z	X13
RS422 ABZ Encoder Signals	X13	X12	X13
Sensor supply (5V) from	X13	X12	X13

See also chapter 4 "Sensor and differential Hall Switches Wiring".

### 3.2 Faulhaber EC Motors

Supported Types: 1628 T 024 B K1155  
 2036 U 024 B K1155  
 2036 U 036 B K1155  
 2444 S 024 B K1155  
 2444 S 048 B K1155  
 3056 K 024 B K1155  
 3056 K 036 B K1155  
 3564 K 024 B K1155  
 3564 K 036 B K1155  
 4490 H 024 B K1155  
 4490 H 048 B K1155

LM 1247 – 020 - 01  
 LM 1247 – 080 - 01  
 LM 1247 – 120 - 01

LM 2070 – 040 - 01  
 LM 2070 – 120 - 01

Feedback: Analog hall sensors & optional encoder

Commutation: - Based on hall sensor signals

Position Control: - Based on hall sensor signals or optional encoder

Wiring:

	B1100	E1100	E1200
Motor Phases A,B,C A → U B → V C → W	X2 or X3	X2 or X3	X2
Hall Sensors A,B,C A → X3.4 B → X3.9 C → do not connect!	X3	X3	X3
Optional Encoder	X13	X12	X13

### 3.3 Metronix APM Servo Motors (e.g. from Elmo Motion Control)

Supported Types:    APM SA01ACN-9  
                          APM SB03ADK-9

Feedback:            Hall switches & ABZ encoder

Commutation:       - Based on hall switches until first Z pulse from encoder  
                          - Based on encoder signals afterwards (sine commutation)

Position Control:    - Based on feedback from ABZ encoder

Wiring:

	B1100	E1100	E1200
Motor Phases U,V,W and Ground	X2 or X3	X2 or X3	X2
Hall Switches U, V, W	X13	X10 U → A V → B W → Z	X13
RS422 ABZ Encoder Signals	X13	X12	X13
Sensor supply (5V) from	X13	X12	X13

See also chapter 4 "Sensor and differential Hall Switches Wiring".



**3.4 Motor Power Company Tetra Brushless Servo Motors**

Supported Types: T56SR1.35.E.L.08  
T85SR2.2.E.L.12

Feedback: Hall Switches & ABZ Encoder

Commutation: - Based on Hall Switches until first Z pulse from Encoder  
- Based on Encoder signals afterwards (Sine Commutation)

Position Control: - Based on feedback from ABZ encoder

**Wiring:**

	B1100	E1100	E1200
Motor Phases U,V,W and Earth	X2 or X3	X2 or X3	X2
Hall Switches U, V, W	X13	X10 U → A V → B W → Z	X13
RS422 ABZ Encoder Signals	X13	X12	X13
Sensor supply (5V) from	X13	X12	X13

### 3.5 Siboni Motors

Supported Types: B60L 585, B60C 596

Feedback: Hall Switches & ABZ Encoder

Commutation: - Based on Hall Switches until first Z pulse from Encoder  
 - Based on Encoder signals afterwards (Sine Commutation)

Position Control: - Based on feedback from ABZ encoder

Thermal protection: - PTC

Wiring:

	B1100	E1100	E1200
Motor Phases U, V, W and Earth U → W V → V W → U	X2 or X3	X2 or X3	X2
Hall Switches U, V, W	X13	X10 U → A V → B W → Z	X13
RS422 ABZ Encoder Signals Supply +5V red GND black SHIELD SHIELD CH A blue CH /A blue/black CH B green CH /B green/black CH Z yellow CH /Z yellow/black Hall U brown Hall /U brown/black Hall V grey Hall /V grey/black Hall W white Hall /W white/black	X13	X12	X13
Sensor supply (5V) from	X13	X12	X13
PTC		X4.10/X4.11	X4.10/X4.11

See also chapter 4 "Sensor and differential Hall Switches Wiring".

## 4 Sensor and differential Hall Switches Wiring

Signal	B1100 & E1200	E1100	
	X13 - Pin	X12 - Pin	X10 - Pin
+5V	1	1	
/A	2	2	
/B	3	3	
/Z	4	4	
GND	5	5	
/U	6		2
/V	7		6
/W	8		5
A	9	6	
B	10	7	
Z	11	8	
Enc. Alarm	12	9	
U	13		1
V	14		3
W	15		4
Shield	case	case	case

Figure 1: B1100, E1100 and E1200 sensor and differential hall switches wiring

## 5 Hall Switches vs. Commutation Angle

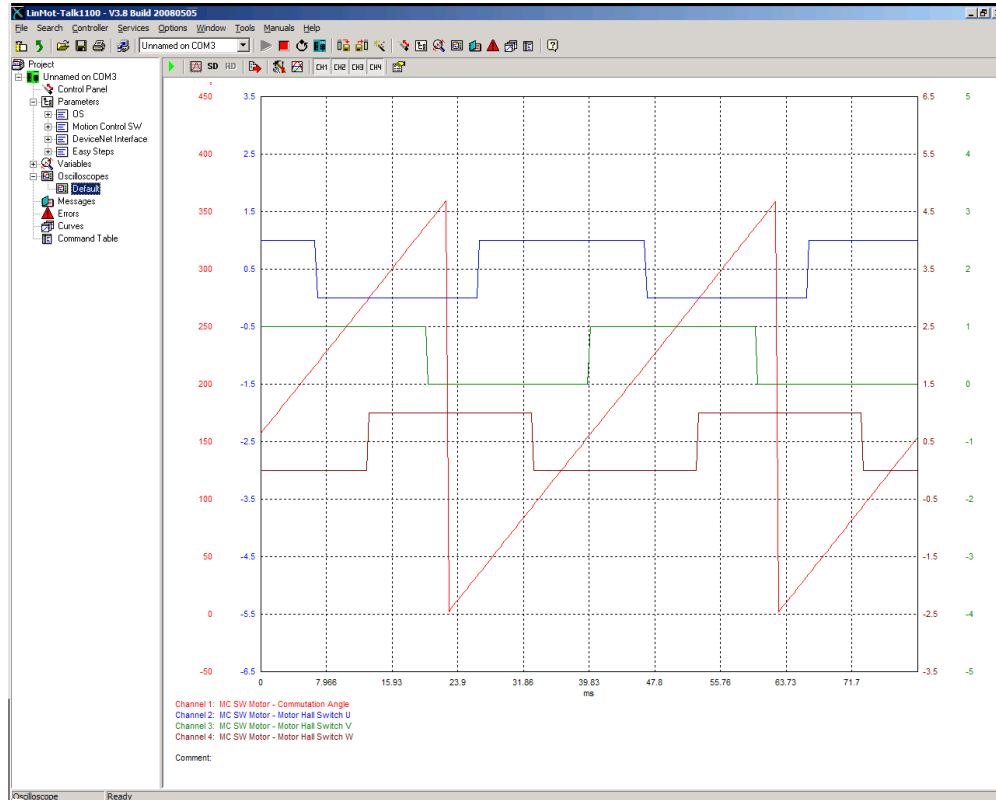


Figure 2: Hall switches vs. commutation angle situation 1

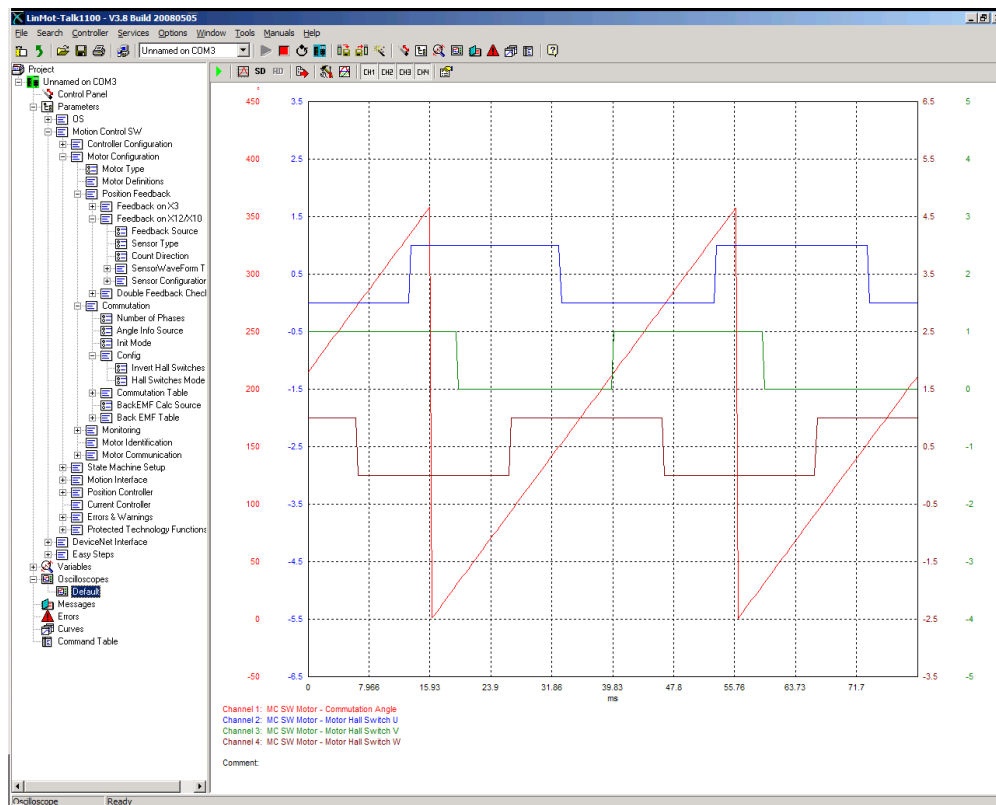


Figure 3: Hall switches vs. commutation angle situation 2 with changed direction

## 6 Contact Addresses

---

### SWITZERLAND

**NTI AG**  
Haerdlistr. 15  
CH-8957 Spreitenbach

**Sales and Administration:** +41-(0)56-419 91 91  
[office@linmot.com](mailto:office@linmot.com)

**Tech. Support:** +41-(0)56-544 71 00  
[support@linmot.com](mailto:support@linmot.com)

**Tech. Support (Skype) :** [skype:support.linmot](https://www.skype.com/contact/linmot)

**Fax:** +41-(0)56-419 91 92

**Web:** <http://www.linmot.com/>

---

### USA

**LinMot, Inc.**  
5750 Townline Road  
Elkhorn, WI 53121

**Sales and Administration:** 877-546-3270  
262-743-2555

**Tech. Support:** 877-804-0718  
262-743-1284

**Fax:** 800-463-8708  
262-723-6688

**E-Mail:** [us-sales@linmot.com](mailto:us-sales@linmot.com)

**Web:** <http://www.linmot-usa.com/>

---

Please visit <http://www.linmot.com/> to find the distribution near you.

Smart solutions are...

