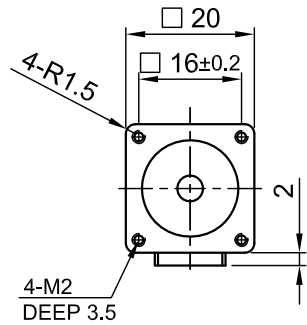
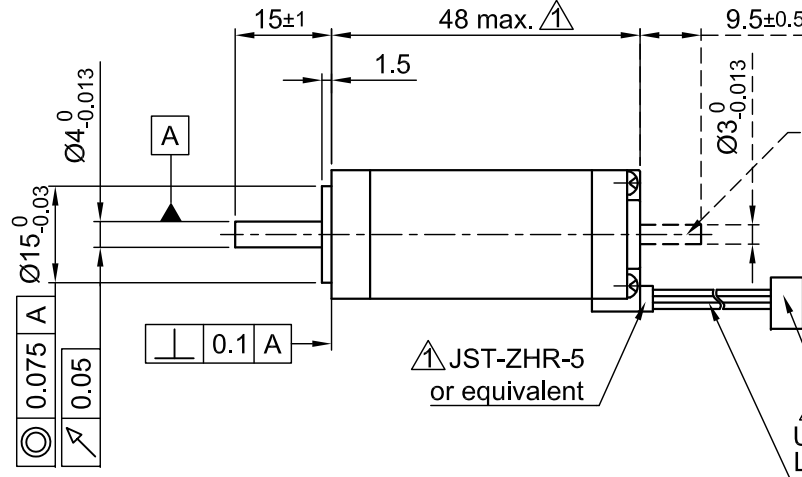


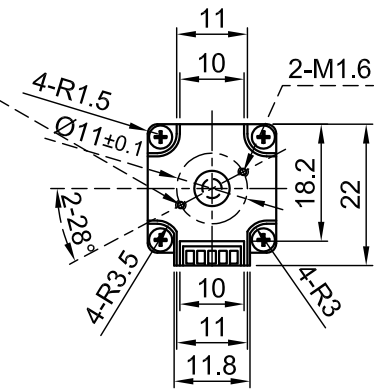
Front view and mounting



Side view



Rear view

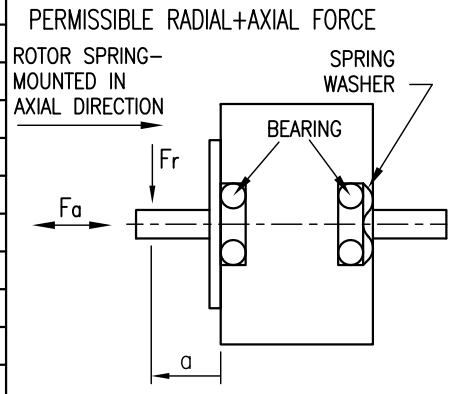


(only for type ST2018L0804-B Ready for encoder + driver mount)

Connector Type: JST XHP-4 Contact: SXH-001T-P0.6

UL1061 AWG26 L=300+10mm

SPECIFICATION	BIPOLAR
VOLTAGE (VDC)	4.8
AMPS/PHASE	0.8
RESISTANCE/PHASE (Ohms)@25°C	6.0±15%
INDUCTANCE/PHASE (mH) @1KHz	2.2±20%
HOLDING TORQUE (Nm) [lb-in]	0.036 [0.319]
DETENT TORQUE (Nm) [lb-in]	1.08x10 ⁻³ [9.57x10 ⁻³]
STEP ANGLE (°)+ ACCURACY	1.8±5%
BACK-EMF (V) (300 U/min)	0.72 min.
ROTOR INERTIA (Kg-m ²) [lb-in ²]	2.3x10 ⁻⁷ [7.861x10 ⁻⁴]
WEIGHT (Kg) [lb]	0.09 [0.198]
TEMPERATURE RISE: MAX.80°C (MOTOR STANDSTILL; FOR 2 PHASE ENERGIZED)	
AMBIENT TEMPERATURE -10~ 50°C [14°F ~ 122°F]	
INSULATION RESISTANCE 100 MOhm (UNDER NORMAL TEMPERATURE AND HUMIDITY)	
INSULATION CLASS B 130° [266°F]	
DIELECTRIC STRENGTH 500VAC FOR 1 MIN. (BETWEEN THE MOTOR COILS AND THE MOTOR CASE)	
AMBIENT HUMIDITY MAX. 85% (NO CONDENSATION)	

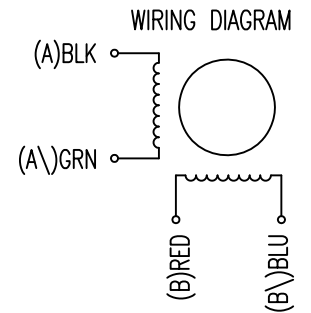


AXIAL-FORCE Fa (N)	Fa=4			
DISTANCE a (mm)	5	10	15	20
RADIAL-FORCE Fr (N)	30	18	14	8
	AXIAL	RADIAL		
SHAFT PLAY (mm)	0.075	0.025		
AT LOAD MAX: (N)	10	5.0		

TYPE OF CONNECTION (EXTERN)	MOTOR		
	CONNECTOR PIN NO.	LEADS	WINDING
A —	1	BLK	A
A\ —	2	GRN	A\
B —	3	RED	B
B\ —	4	BLU	B\

FULL STEP 2 PHASE-Ex., WHEN FACING MOUNTING END (X)

STEP	A	B	A\	B\	CCW
1	+	+	-	-	
2	-	+	+	-	
3	-	-	+	+	CW
4	+	-	-	+	



2	BACK-EMF SUPPLEMENTED	28.06.11	J.W.	 Nanotec [®] PLUG & DRIVE	SCALE FREE	APVD	S.K.	02.06.06	STEPPING MOTOR DWG.NO
1	CONNECTOR TYPE+UL NO.+LENGTH	08.01.09	J.W.		X ±0.5	CHKD			
REV	DESCRIPTION	DATE	APVD		ST2018L0804	1PL ±0.2	DRN	J.W.	02.06.06
					2PL ±0.1	SIGNATURE		DATE	
					ANGLE ±30'				